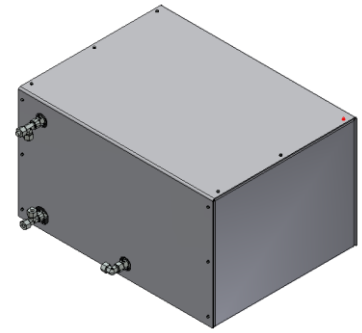


> Laboratory Platen Presses

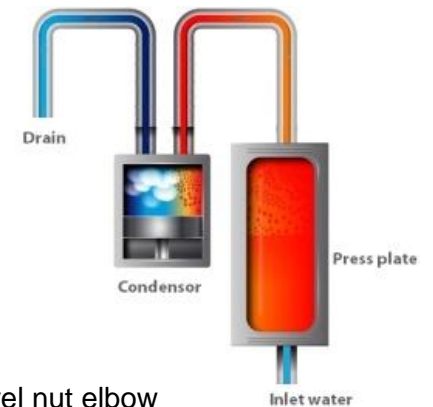
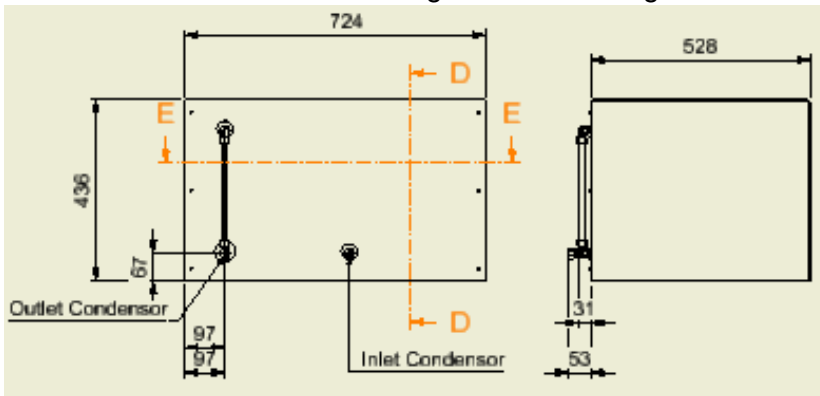
Steam Condenser Specifications and Connections

Steam Condenser (air-cooled) for indoor installation.

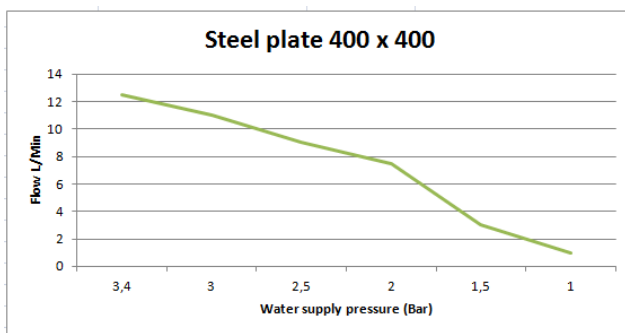
- Self supporting aluminium cover
- Tank stainless steel housing
- Cooling liquid: water
- Air/water-cooled condenser
- Buffer tank volume: 60 litre
- Weight: 42 kg (Empty)
- Overall dimensions: (l x b x h = 724 x 559 x 436 mm)



To condensate the steam coming from the cooling channels into water before drain off.

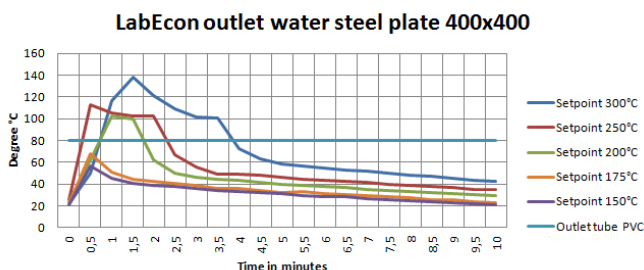


Inlet Condensor at the back (middle) of the condensor and has a swivel nut elbow M22x1,5mm outside thread connection, to use with a coupling for steel pipe of $\varnothing 15$ mm.
Outlet Condensor at the back (corner) of the condensor and has a swivel nut tee M22x1,5mm outside thread connection, to use with a coupling for steel pipe of $\varnothing 15$ mm.



Flow is dependent on the water supply pressure.
Maximum import and export of the water volume and the temperature dependent of the intense use on the machine cycle.

To condensate the steam coming from the cooling channels into the steam condenser, will make some noise. This is unavoidable. Inside the steam condenser there are acoustic foam and heat resistant layers. The hose is also heat resistant, and will be connected between de outlet LabEcon and the inlet steam condensor.



FONTIJNE
PRESSES
When quality matters

Fontijne Presses & Services BV
Ebweg 54, 2991 LT
Barendrecht, The Netherlands
Phone: +31 (0)180-20 30 52

www.fontijnepresses.com